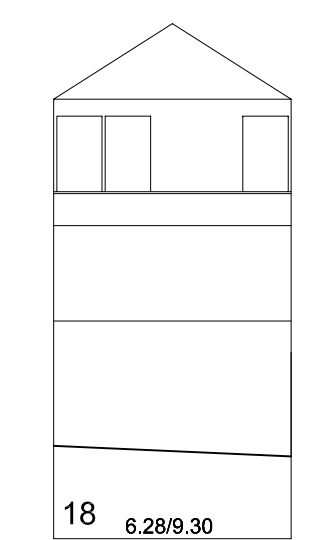




02 5.46/8.25 01 7.78/8.10 01 20 1.88/8.30 11.07/4.20 06 8.78/4.25 07 9.41/19.25 10 4.73/19.50 11 13.30/19.35 12 13 19 10.85/3.20 18 10.60/9.25

Rúa de Eduardo Chao



18 6.28/9.30

Rúa de Eduardo Chao



18 11.08/9.35 22 6.42/2.80

Rúa de Eduardo Chao



22 6.30/2.65 18 7.00/8.40 17 7.30/12.75

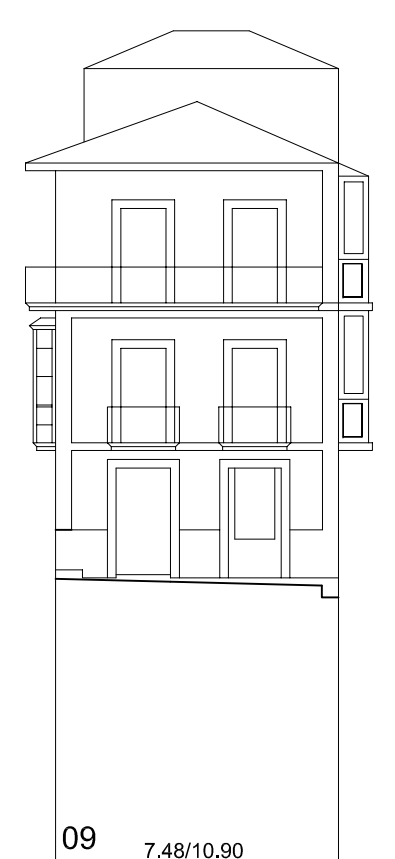
Rúa Alta



17 13.44/13.90 21 3.00/5.95 16 3.00/7.65 15 5.43/10.70 14 5.57/10.45 13 3.92/8.35 12 5.80/6.60 11 8.27/15.48 10 8.71/15.25 07 7.37/11.60 08 6.87/14.55 09 10.00/10.55

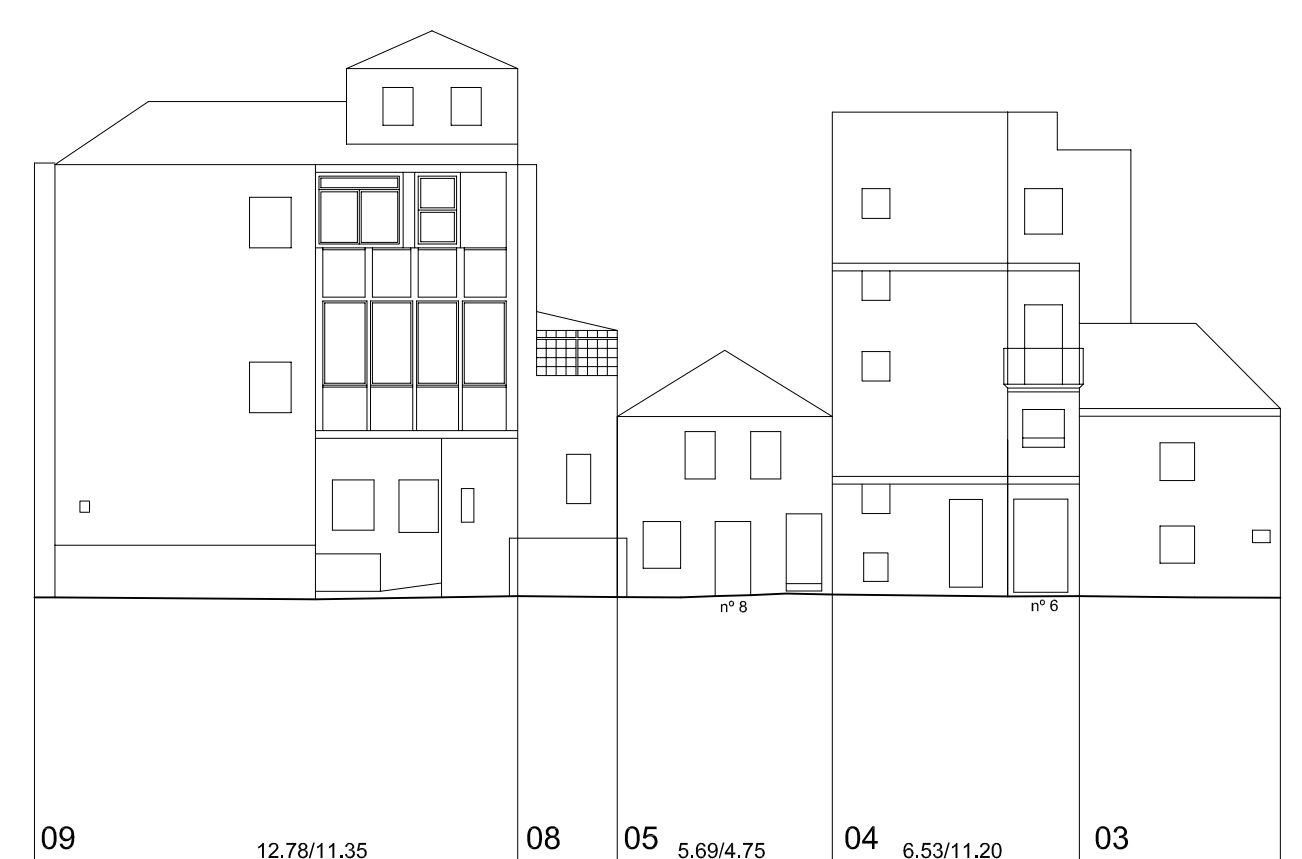
Rúa Alta

Rúa San Vicente



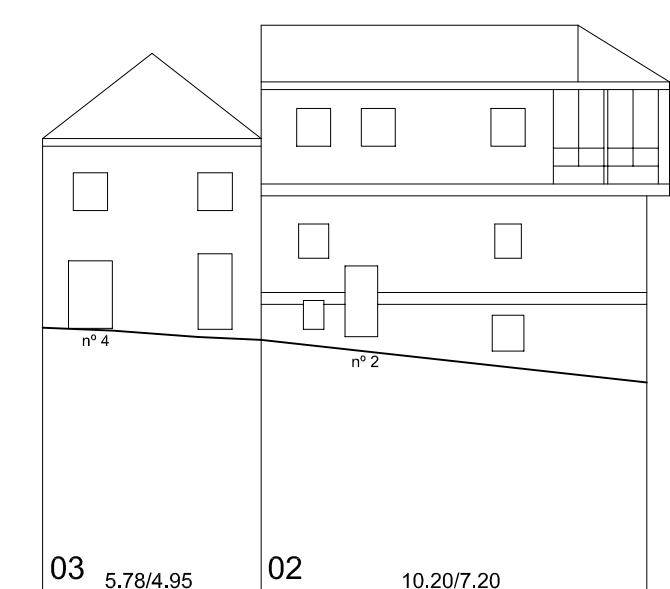
09 7.48/10.80

Rúa Caracol




09 12.78/11.35 08 2.63/7.00 05 5.69/4.75 04 6.53/11.20 03 5.31/4.80

Rúa Caracol



03 5.78/4.95 02 10.20/7.20



	PLAN ESPECIAL DE PROTECCIÓN E REFORMA INTERIOR CASCO VELLO DE VIGO	FASE: APROB. DEFINITIVA
	PLANOS DE INFORMACIÓN TÍTULO: <b>ALZADOS. ESTADO ACTUAL. COUZADA 26643</b>	PLANO Nº <b>3.27</b> ESCALA 1/200 DATA: DICIEMBRE 2006
CONSULTORA GALEGA, S.L. RÚA SAN MARTÍN, 3 B 36002 PONTEVEDRA - T. 986 85 89 57 - FAX. 986 85 89 58 - E-mail: consultora@consultoragalega.com		

Nº PARCELA      FRENTE PARCELA/ALTURA DE CORNISA (COTAS EN METROS)